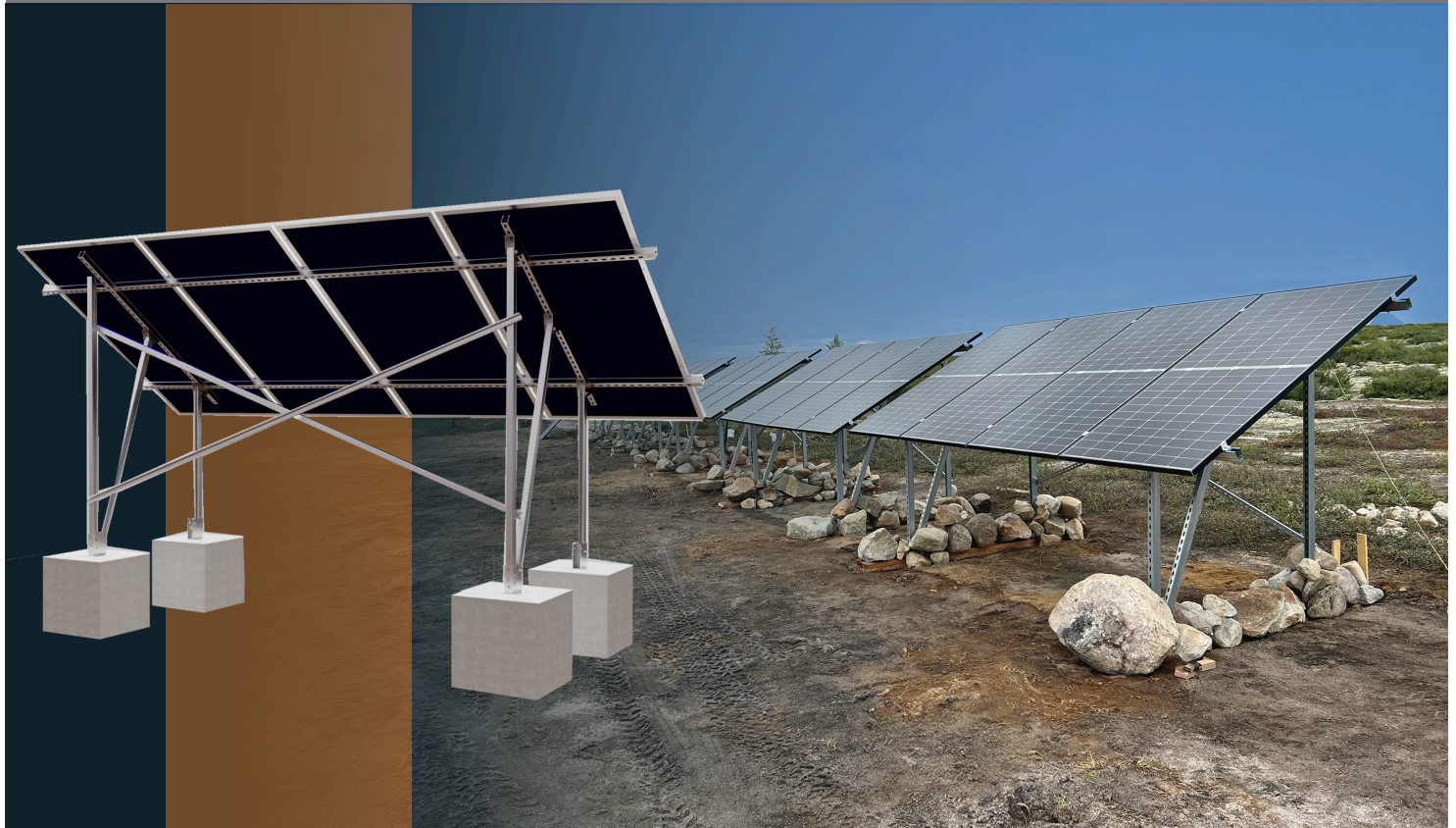


ELIOS | Terra G4

Ground Mount System for 4 Solar Panels

Data Sheet



This versatile system is perfect for a wide range of applications, from residential use to off-grid cottages. By utilizing two 8-foot cylinders, your panels can reach heights of up to 15 feet, ensuring optimal sun exposure without any obstruction from trees or shade. Plus, manual adjustment allows for angles between 10 and 70 degrees, maximizing performance year-round and simplifying snow removal.

Features & Benefits



Compatible with 4 Solar panel of 60 or 72 cells



Built tough to withstand all kinds of weather, ensuring it lasts for years.



Crafted for long-lasting durability using stainless steel, aluminum, and ZAM® steel.



Adjustable height and angle according to the seasons.



Stainless steel installation hardware.

ELIOS | Terra G4

Ground Mount System for 4 Solar Panels

Data Sheet

SPECIFICATIONS

Install Site	Open terrain
Module Type	Framed
Module Orientation	Landscape
Size of Module Array	4 panels of 60 or 72 cells
Tilt Angle	35°
Base Size	150x150mm base with 4 expansion anchor bolts
Max Wind Speed	42m/s
Snow Load	1.4kn/m2
Material	Galvanized steel pole Aluminum rails and clamps

PACKAGING INFORMATION

Retail Box Dimensions (LxWxD)	1 set/ wooden crate, 3400 x 236 x 245mm (133.8 x 9.3 x 9.6in)
Total Weight	98.6kg (217.37 lbs)

Applications

- Off-Grid
- Rural Areas
- Telecommunication
- Agricultural
- Commercial and Industrial Use
- Lightening and Surveillance System

Warranty

- 5 years limited warranty.

Dimensions

