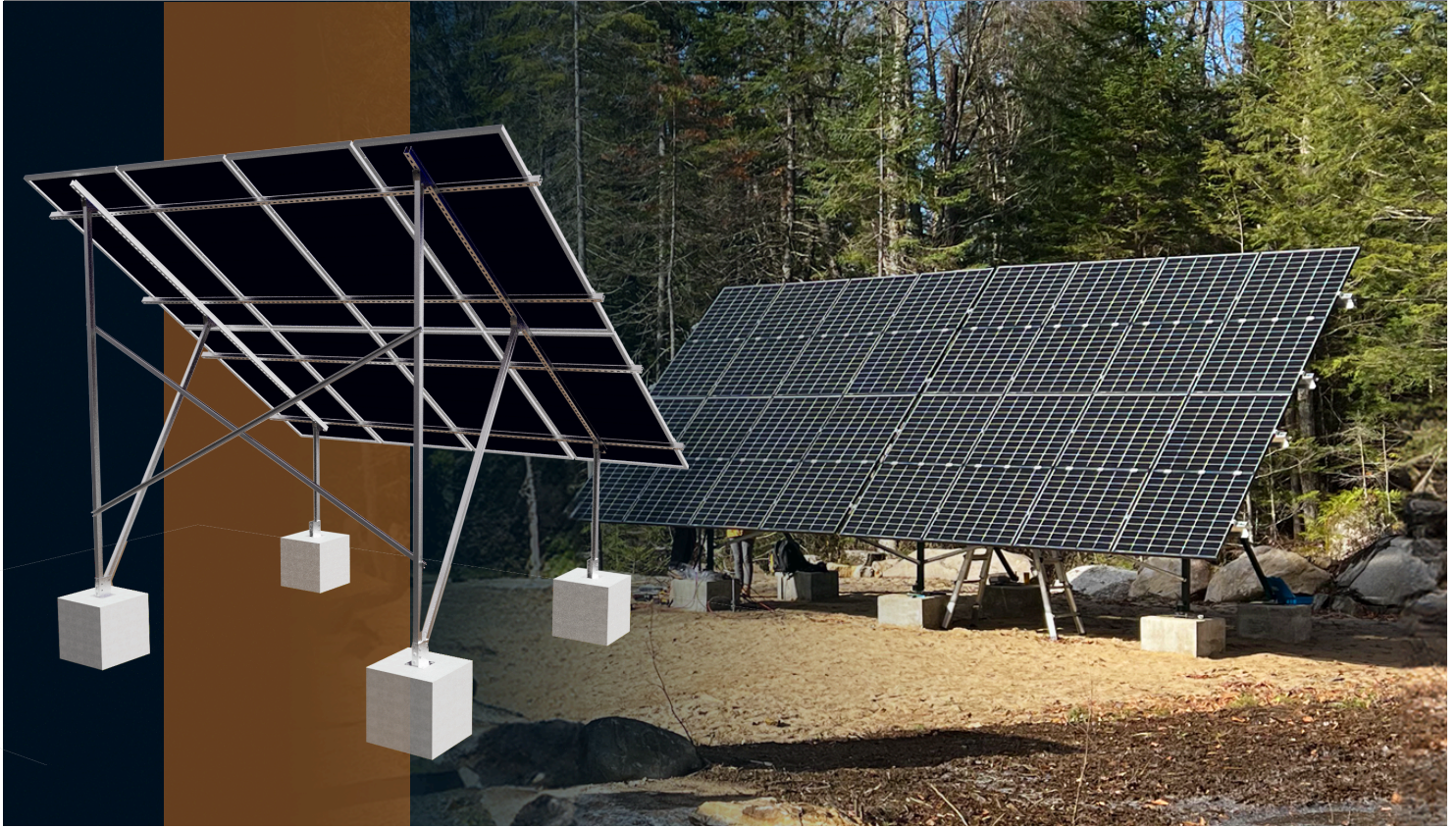


# ELIOS | Terra G8

Ground Mount System for 8 Solar Panels

Data Sheet



The Elios Terra G8 is a durable and dependable ground mount system, engineered to securely support 8 solar panels. Constructed from high-quality materials to withstand harsh weather, it ensures easy installation while providing a stable base for optimal energy efficiency and performance. Whether for residential or commercial use, the Terra G8 is an ideal solution for a reliable and efficient solar setup.

## Features & Benefits



Compatible with 8 Solar panel of 60 or 72 cells



Built tough to withstand all kinds of weather, ensuring it lasts for years.



Crafted for long-lasting durability using stainless steel, aluminum, and ZAM® steel.



Adjustable height and angle according to the seasons.



Stainless steel installation hardware.

# ELIOS | Terra G8

## Ground Mount System for 8 Solar Panels

### Data Sheet

#### SPECIFICATIONS

Install Site	Open terrain
Module Type	Framed
Module Orientation	Landscape
Size of Module Array	8 panels of 60 or 72 cells
Tilt Angle	35°
Base Size	150x150mm base with 4 expansion anchor bolts
Max Wind Speed	42m/s
Snow Load	1.4kn/m2
Material	Galvanized steel pole Aluminum rails and clamps

#### PACKAGING INFORMATION

Retail Box Dimensions (LxWxD)	1 set/ wooden crate, 3850 x 285 x 250mm (151.5 x 11.2 x 9.8in)
Total Weight	149kg (328.5 lbs)

#### Applications

- Off-Grid
- Rural Areas
- Telecommunication
- Agricultural
- Commercial and Industrial Use
- Lightening and Surveillance System

#### Warranty

- 5 years limited warranty.

#### Dimensions

